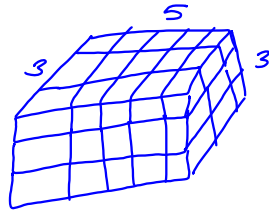


10.7 Volume of Prism

Volume

- How much can I put inside

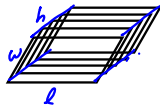
Cube (Answer is in cubic units)



$$\begin{array}{r} 15 \\ 15 \\ \hline 45 \end{array}$$

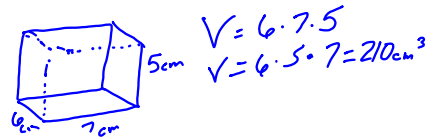
45 cubes
45 cubic units
45 units³

Layers of a certain area
h
r.w



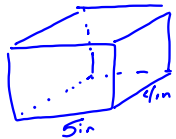
$$\text{Volume} = l \cdot w \cdot h$$

$$V = 3 \cdot 5 \cdot 3 = 45$$



$$V = 6 \cdot 7 \cdot 5$$

$$V = 6 \cdot 5 \cdot 7 = 210 \text{ cm}^3$$



A box is used to ship dice

IF the box is 5x4x3 how many 1in³ dice can be shipped

$$V = 5 \cdot 4 \cdot 3 = 60 \text{ in}^3$$

60 dice

$$V = 2 \text{ in} \times 1 \text{ in} \times 3 \text{ in} = 6 \text{ in}^2$$

10 inch logs

$$\text{Volume} = l \cdot w \cdot h$$

$$21,600 = l \cdot 12 \cdot 30$$

$$\frac{21,600}{360} = \frac{l \cdot 360}{360}$$

$$36 \overline{) 2160} \quad 60 = l \quad \text{SF} \times 1 \text{ ft} \times 2.5 \text{ ft}$$

$V = l \cdot w \cdot h$
P 552 - 553
2-24-17