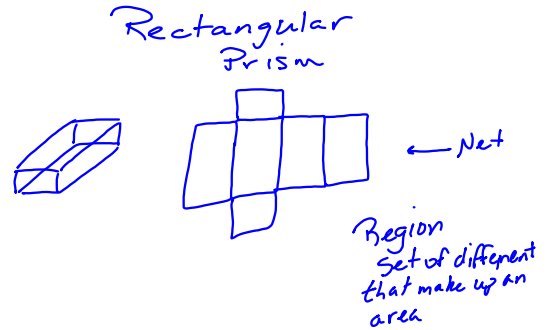


10.6 Surface Area of a Prism

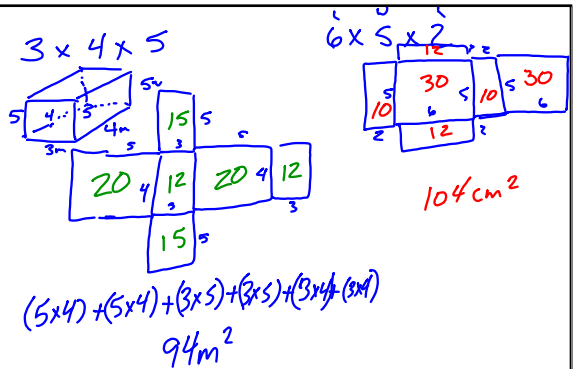
Nets - A 2-D look at an unfolded space figure



Surface Area

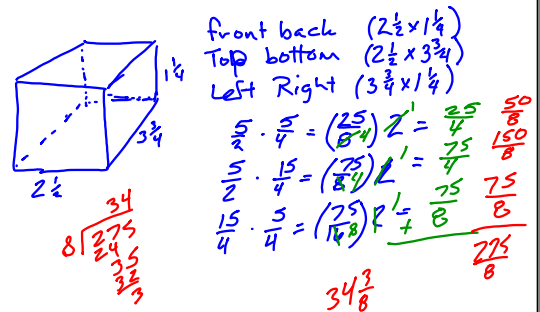
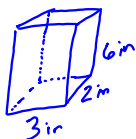
- Sum of all the areas of all the faces

need dimensions
traditional
 $l \times w \times h$
 l by w by h



In Rectangular Prisms

Bottom	Top	$(3 \times 2) + (3 \times 2)$	12
Front	Back	$(3 \times 6) + (3 \times 6)$	36
Left	Right	$(2 \times 6) + (2 \times 6)$	24
			<hr/>
			72 in ²



7 547-548
2-24 even