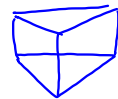
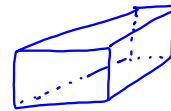


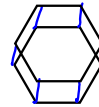
10.5 Solid Figures

Three dimensional figure
that encompasses space

5 types by definition

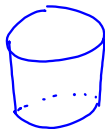


If two sides are parallel and
congruent



Prism

1. 2 equal polygons on bottom and top (bases)
1. Sides are rectangles

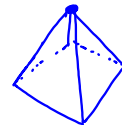
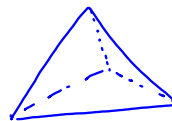


bases are congruent
and parallel

By definition not a
prism

Cylinder

1. Bases that are congruent parallel circles
2. Side is a rectangle

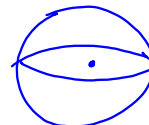


Pyramids

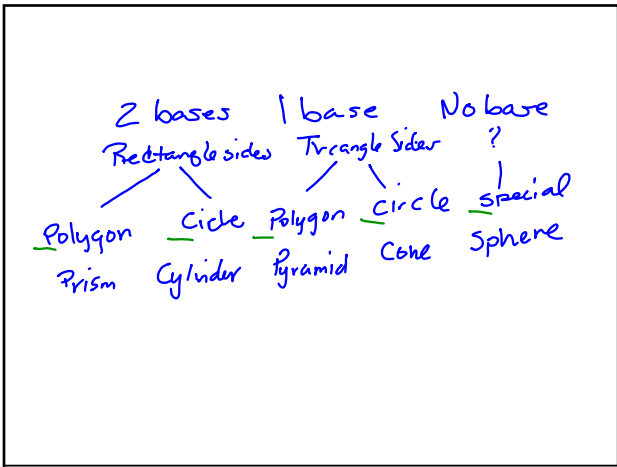
1. Only one base
2. Sides are triangles and they all have a common vertex



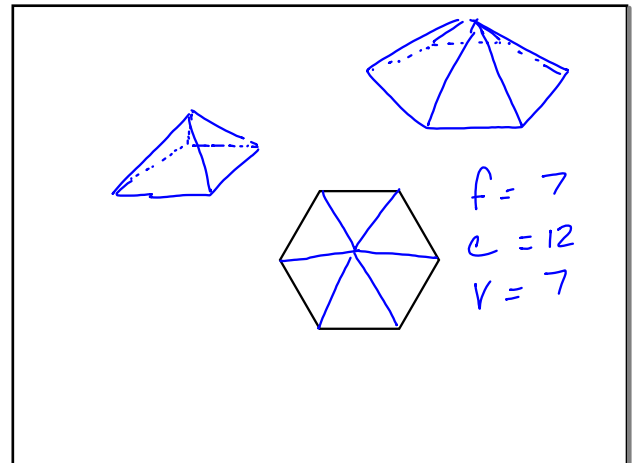
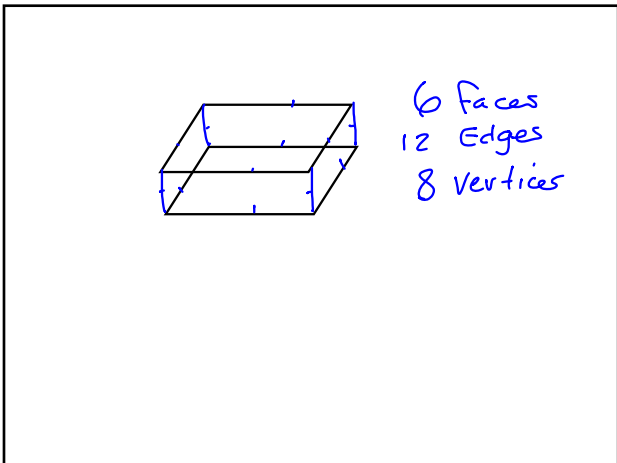
Cone - 1 base
that is a circle
side not triangle



Sphere
- No base



Faces - Flat surface
Edges - Line segments (where flat surfaces intersect)
Vertices - Corners (where line segments intersect)



P 543 - 544
 1 - 20ail
 26 - 29ail