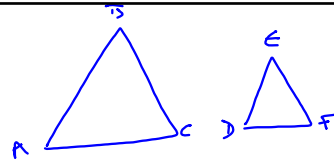
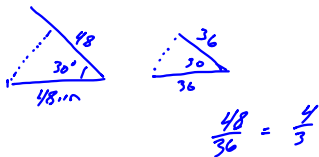


8.5 Proving Triangles are Similar

Yesterday AA similarity

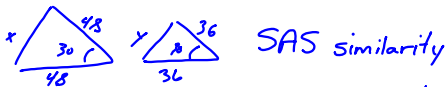
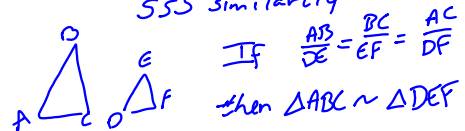


Started off
3 angles \cong and statement
of proportionality
All sides are proportional

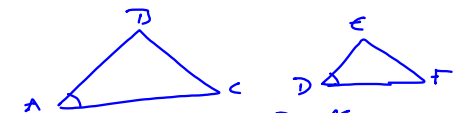


If the Statement of Prop.
is true for all 3 sides
then the triangles are similar

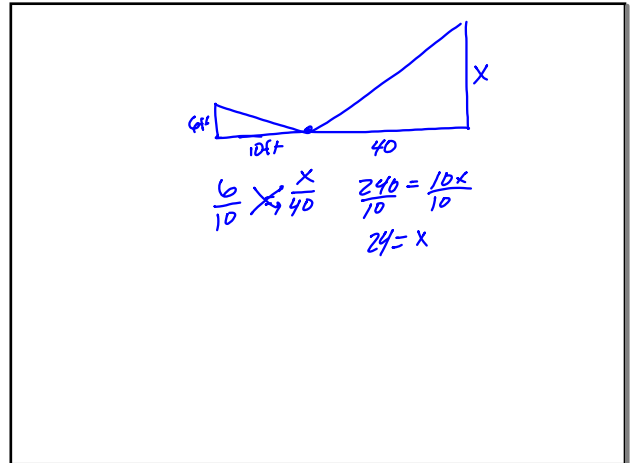
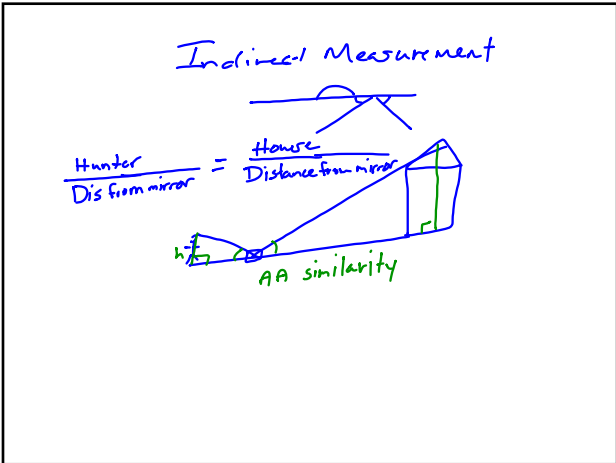
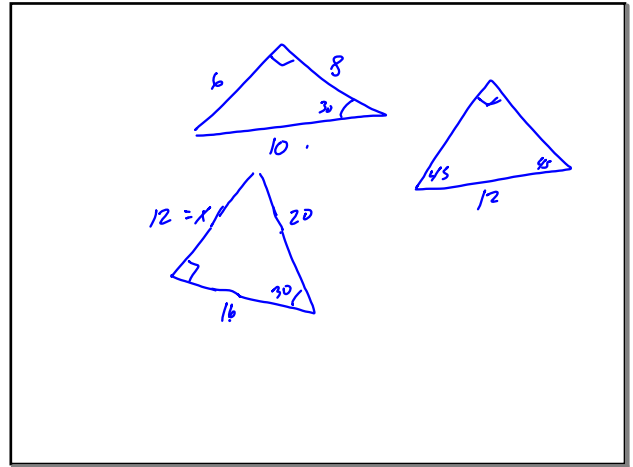
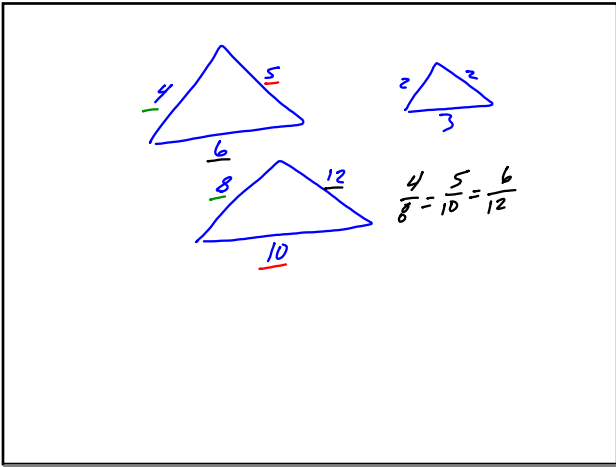
SSS similarity



If one angle is congruent to an angle
in another triangle, and the two sides
that include the angle are proportional
to the other triangle
Then the triangles are similar



IF $\angle A \cong \angle D$, $\frac{AB}{DE} = \frac{AC}{DF}$
then $\triangle ABC \sim \triangle DEF$



P 492-494
 2-34 even
 skip 30