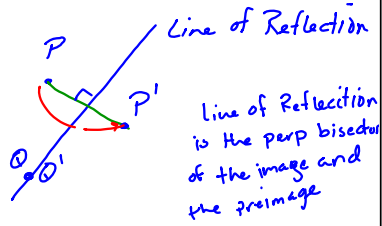
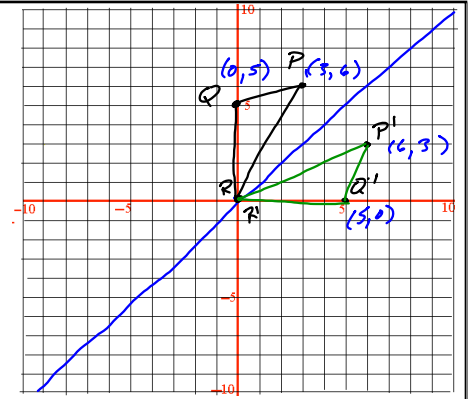


### 10.2 Reflections



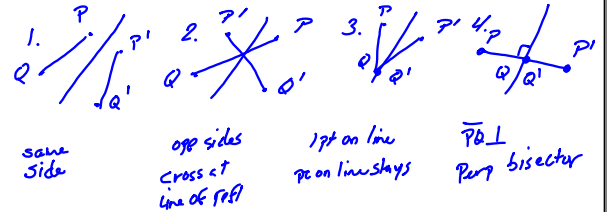
$y = x$  line



Thm 7.1

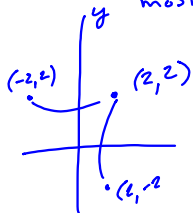
Reflections are Isometries  
sides, angles, parallel stay same

When considering 2 points in a reflection there are 4 outcomes



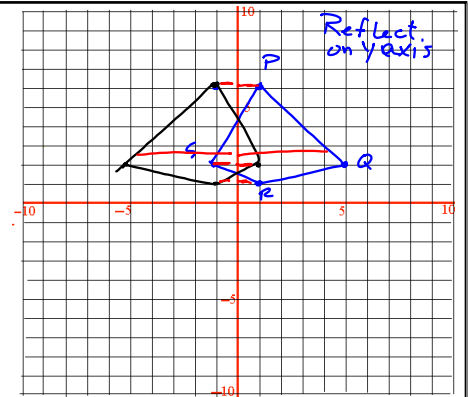
### Coordinate Plane

Reflections occur on Axis most of the time

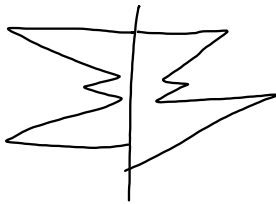
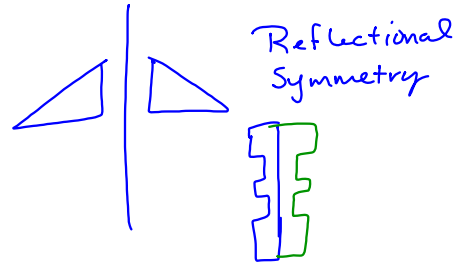
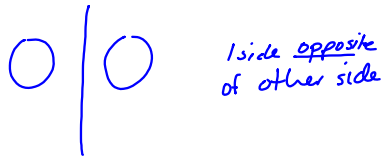


- Reflect on y-axis  $(x,y) \rightarrow (-x,y)$
- Reflect on x-axis  $(x,y) \rightarrow (x,-y)$
- Reflect on  $y=x$  line  $(x,y) \rightarrow (y,x)$

- $P'(-1,4)$
- $Q'(-5,2)$
- $R'(-1,1)$
- $S'(1,2)$



Line of Symmetry



P 407 - 408  
2 - 40 even

