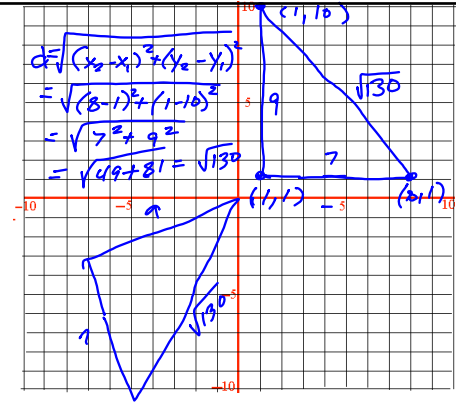


9.7 Triangles and Coordinate Proofs

How do you use coordinates
Not using angles

SSS
distance Formula

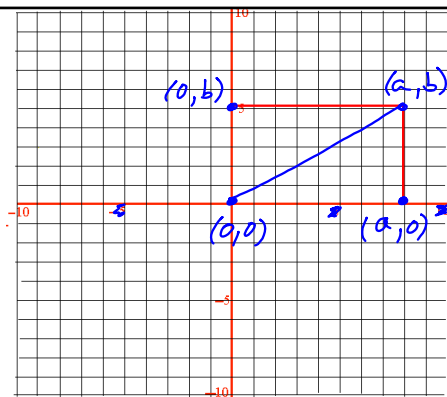


Standard Position

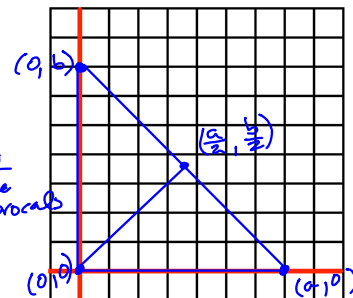
In Geometry, refers to a figure that has a side on an axis and a vertex at the origin or is centered on the origin

Standard Position

- uses variables to describe distance
- use a minimum number of variables
- use parallelograms rectangles triangles, trapezoid



Slopes
slope \perp
if opposite
reciprocals



$$m = \frac{y_2 - y_1}{x_2 - x_1}$$

$$\frac{b - 0}{0 - a} = -\frac{b}{a}$$

$$\frac{0 - b}{a - 0} = -\frac{b}{a}$$

