

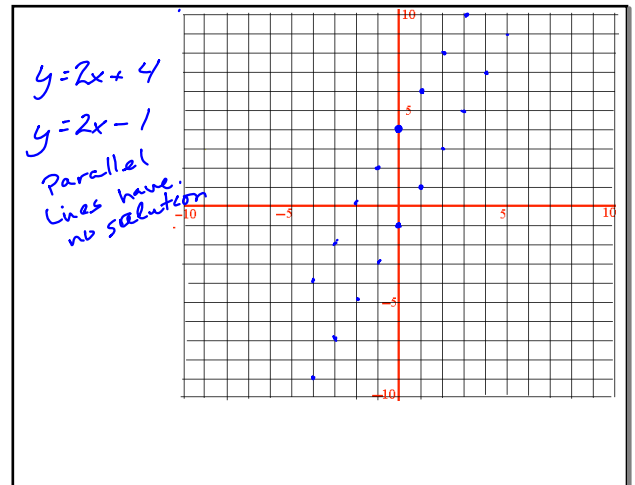
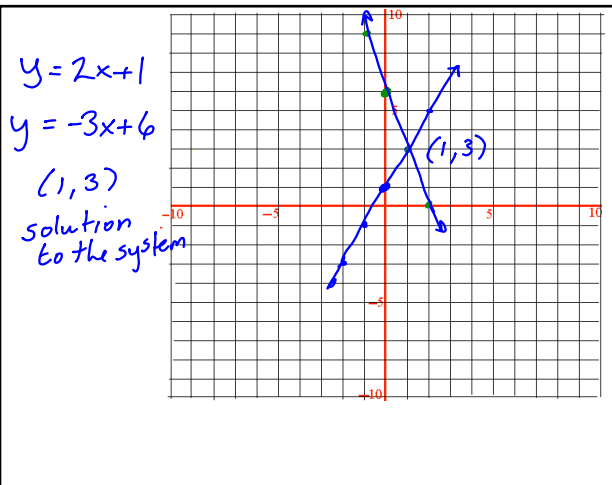
3.1 Systems of Equations

Focus on any points of intersection

Graphing Review

$$y = 2x + 1$$

\swarrow slope \searrow y-int
 $\uparrow 2 \rightarrow 1$
 $\downarrow 2 \leftarrow 1$



Inequalities

- $<$, $>$ dashed
 \leq , \geq solid line
- Where do we shade
 \hookrightarrow test point $(0, 0)$
 shade where true

