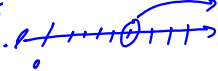


### 8.4 Graphing Linear Inequalities

Graphing Linear problems that involve  $>$ ,  $<$ ,  $\geq$ ,  $\leq$

Remember  $x > 5$  

$$y > 3x + 1$$

$0 > 0 + 1$   
No

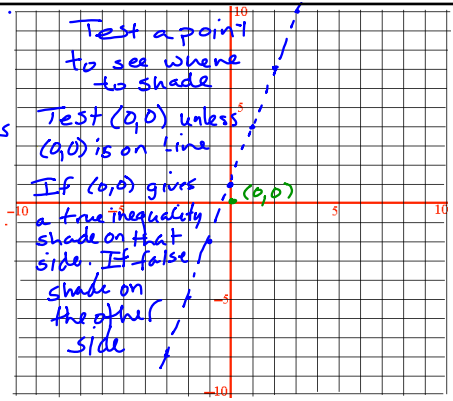
Inequalities

$>$ ,  $<$

dashed line

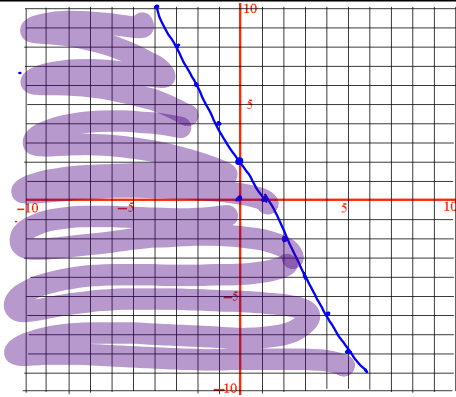
$\geq$ ,  $\leq$

solid line



$$y \leq -2x + 2$$

$0 \leq 0 + 1$   
true



$$2x - 3y \geq 6$$

$0 - 0 \geq 6$   
No

