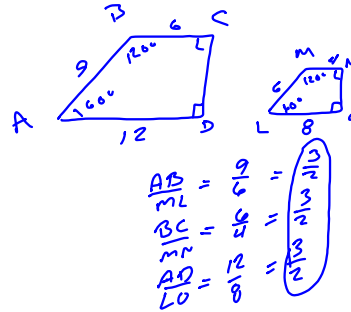


6.5 Similar Polygons

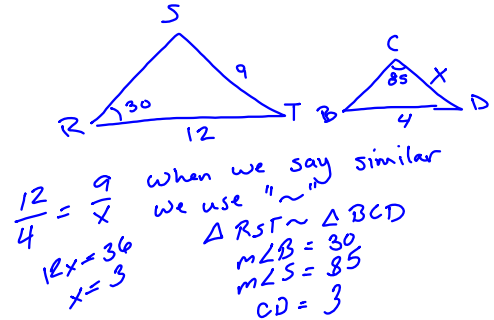
In Geometry,

Similar describes
a 2 shapes that are

- Same Shape - same angles measure
- Different Size - size is not equal size is proportional



Proportional sides
are going to always
have the same ratio
when comparing
corresponding sides



Scale

Part to total
drawing to original

$1 \text{ in} : 5 \text{ mi}$ $2 \text{ cm} : 7 \text{ km}$
 $\frac{1}{5} = \frac{12}{x}$ $\frac{2}{7} = \frac{x}{154}$
 60 mi $308 = 7x$
 $44 = x$

