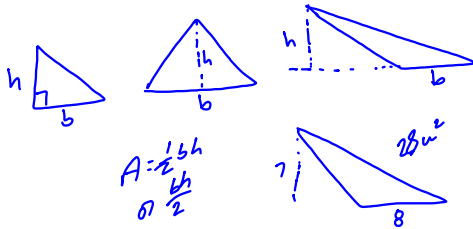
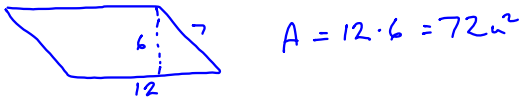
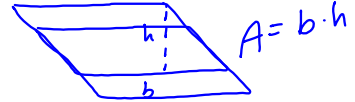
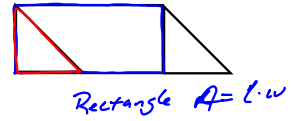
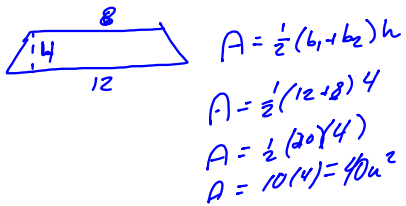
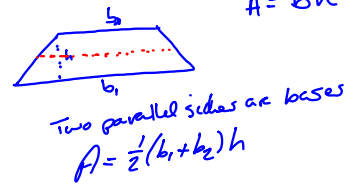


5.7 Area Formulas

- 3 figures
- Parallelograms
- Trapezoids
- Triangles in non standard form



Trapezoids



| Area | Base 1 | Base 2 | Height |
|------|--------|--------|--------|
| 80 | 12 | 16 | ? |
| | | | 5.7 |

$$80 = \frac{1}{2}(12 + 16)h$$

$$80 = \frac{1}{2}(28)h$$

$$\frac{80}{14} = \frac{14h}{14}$$

$$5.7 = h$$