

4.6 Graphs and Functions

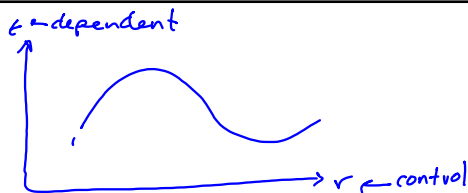
Graphs are made up of a connection between two or more relations

- Variables
- Independent (control)
- Dependent

$$y = 2x + 5$$

$x = 5$ x is my control

$y = 15$ y is dependent on the value of x



Function - a relationship where for each control variable there is only 1 dependent variable

$$\begin{array}{l} x = 2 \quad y = 5 \\ \hline x = 2 \quad y = 2 \end{array}$$

Vertical Line test ←

The graph represents a function if every vertical line drawn in graph crosses the graph at most 1 time

