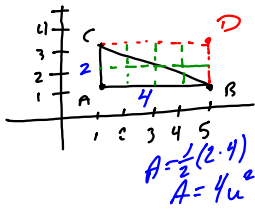


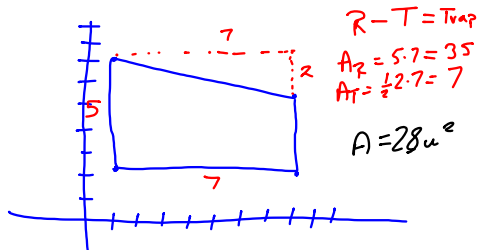
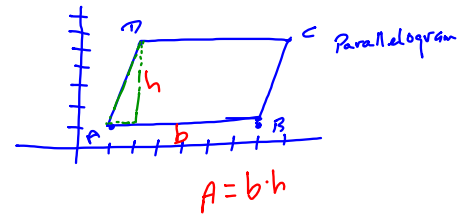
4.2 Coordinate Geometry

Polygons and Area

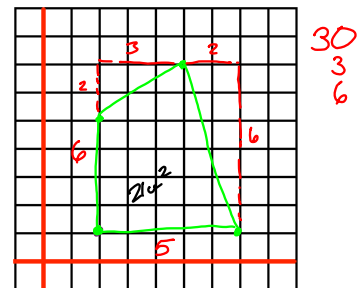


Rectangle
 $A = b \cdot h$
 Triangle is
 half of the
 Rectangle
 $A = \frac{1}{2} b \cdot h$
 $= \frac{b \cdot h}{2}$

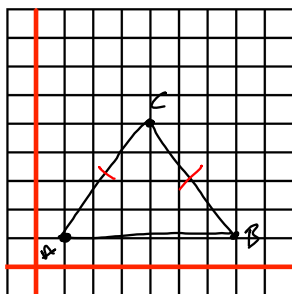
Area of non triangles using triangles



$R - T = \text{Trap}$
 $A_R = 5 \cdot 7 = 35$
 $A_T = \frac{1}{2} \cdot 2 \cdot 7 = 7$
 $A = 28 u^2$

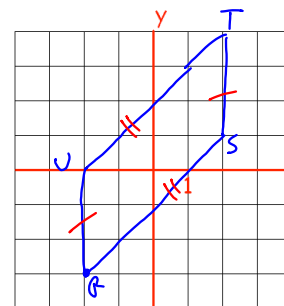


30
 3
 6



\triangle 3os celes
 triangles
 $\overline{AC} \cong \overline{BC}$

$A(1,1)$ $B(3,1)$ $C(2,3)$



Parallelogram
 $\overline{RU} \cong \overline{ST}$
 $\overline{RS} \cong \overline{UT}$

