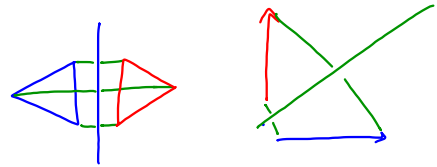


10.1 Reflections

Transformation

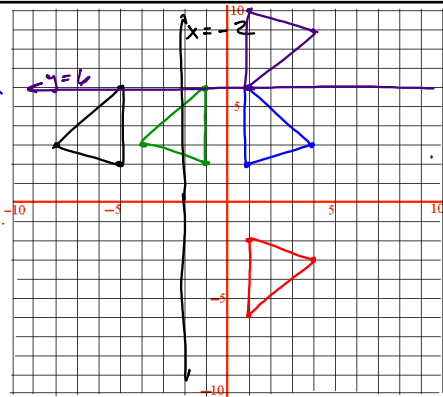
Change in location
No change size or shape

Line of Reflection
- mirror image

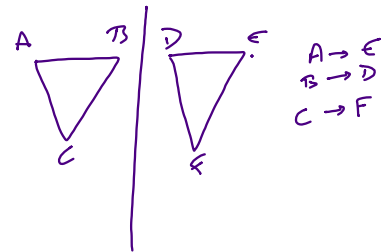


Line of reflection
| vertical — horizontal

Reflection on the y axis



Preimage → Image



Coordinate Notation

$$(x, y) \rightarrow (-x, y)$$

$$(3, 2) \rightarrow (-3, 2)$$

$$(-2, -1) \rightarrow (2, -1)$$